

# **YORKE REGION – SOUTH AUSTRALIA**

**SOCIO - ECONOMIC**

**AND**

**INFRASTRUCTURE PROFILE**

**YORKE REGIONAL DEVELOPMENT BOARD**

**JANUARY 2006**

---

# **YORKE REGION – SOUTH AUSTRALIA**

## **ECONOMIC AND INDUSTRIAL PROFILE**

### **Forward**

THE YORKE REGION IS A DIVERSE AREA STRETCHING FROM THE IMMEDIATE NORTH OF METROPOLITAN ADELAIDE, NORTH ACROSS THE ADELAIDE PLAINS AND ACROSS TO THE YORKE PENINSULA. TRADITIONALLY A FARMING AREA, THE REGION HAS DIVERSIFIED CONSIDERABLY WITH KEY INDUSTRIES NOW INCLUDING AQUACULTURE, TOURISM, MINING, PORK AND POULTRY, AS WELL AS THE TRADITIONAL BROAD-ACRE FARMING OF THE REGION.

THIS PROFILE IS DESIGNED AS A GUIDE FOR INTERESTED BUSINESSES ACROSS ALL INDUSTRIES WHO ARE INTERESTED IN INVESTING IN OUR REGION. IT PROVIDES A COMPREHENSIVE ACCOUNT OF ALL THE FACILITIES THROUGHOUT THE YORKE PENINSULA AND ADELAIDE PLAINS THAT HAVE RELEVANCE TO ESTABLISHING AND GROWING A BUSINESS.

I SINCERELY HOPE THAT THE INFORMATION THAT FOLLOWS WILL GIVE YOU THE UNDERSTANDING REQUIRED OF THE INFRASTRUCTURE AVAILABLE IN THE YORKE REGION.

**IAN O'LOAN**  
**Chairman**  
**Yorke Regional Development Board**

---

---

# Table of Contents

<u>BACKGROUND AND CONTEXT</u> .....	1
<u>THE YORKE REGIONAL DEVELOPMENT BOARD</u> .....	3
<u>PURPOSE</u> .....	3
<u>OBJECTIVES</u> .....	3
<u>FUNCTIONS</u> .....	3
<u>REGIONAL OVERVIEW</u> .....	5
<u>GEOGRAPHY</u> .....	5
<u>DEMOGRAPHY</u> .....	6
<u>ECONOMY</u> .....	8
<u>TOURISM</u> .....	8
<u>CLIMATE</u> .....	9
<u>ECONOMIC AND SOCIAL PROFILE</u> .....	10
<u>YORKE REGION</u> .....	11
<u>Selected Comparisons With LGAs</u> .....	15
<u>BARUNGA WEST (DC)</u> .....	18
<u>COPPER COAST (DC)</u> .....	21
<u>WAKEFIELD (DC)</u> .....	24
<u>YORKE PENINSULA (DC)</u> .....	27
<u>ECONOMIC INFRASTRUCTURE PROFILE</u> .....	30
<u>YORKE REGION</u> .....	30
<u>Transport</u> .....	30
<u>Electricity</u> .....	32
<u>Gas</u> .....	34
<u>Water</u> .....	34
<u>Sewerage</u> .....	36
<u>Telecommunications</u> .....	36
<u>General</u> .....	36
<u>Local Access Network</u> .....	37
<u>Network Infrastructure</u> .....	38
<u>ISDN and Data Services</u> .....	38
<u>Mobile Services</u> .....	39
<u>New CDMA Digital Mobile Technology</u> .....	39
<u>Satellite Services</u> .....	39
<u>Internet Services</u> .....	40
<u>Waste Management</u> .....	43
<u>Business Services</u> .....	43
<u>Tourism Facilities</u> .....	43
<u>BARUNGA WEST (DC)</u> .....	44
<u>Transport</u> .....	44
<u>Electricity</u> .....	44
<u>Gas</u> .....	45
<u>Water</u> .....	45
<u>Sewerage</u> .....	45
<u>Telecommunications</u> .....	46
<u>Industrial Land</u> .....	46
<u>Waste Management</u> .....	46
<u>Business Services</u> .....	46
<u>Tourism Facilities</u> .....	47
<u>COPPER COAST (DC)</u> .....	<b>ERROR! BOOKMARK NOT DEFINED.</b>
<u>Transport</u> .....	<i>Error! Bookmark not defined.</i>
<u>Electricity</u> .....	<i>Error! Bookmark not defined.</i>
<u>Gas</u> .....	<i>Error! Bookmark not defined.</i>

---

---

<a href="#">Water</a> .....	<i>Error! Bookmark not defined.</i>
<a href="#">Sewerage</a> .....	<i>Error! Bookmark not defined.</i>
<a href="#">Telecommunications</a> .....	<i>Error! Bookmark not defined.</i>
<a href="#">Industrial Land</a> .....	<i>Error! Bookmark not defined.</i>
<a href="#">Waste Management</a> .....	<i>Error! Bookmark not defined.</i>
<a href="#">Business Services</a> .....	<i>Error! Bookmark not defined.</i>
<a href="#">Tourism Facilities</a> .....	<i>Error! Bookmark not defined.</i>
<b>WAKEFIELD (DC)</b> .....	<b>48</b>
<a href="#">Transport</a> .....	48
<a href="#">Electricity</a> .....	49
<a href="#">Gas</a> .....	49
<a href="#">Water</a> .....	49
<a href="#">Sewerage</a> .....	50
<a href="#">Telecommunications</a> .....	50
<a href="#">Industrial Land</a> .....	50
<a href="#">Waste Management</a> .....	51
<a href="#">Business Services</a> .....	51
<a href="#">Tourism Facilities</a> .....	51
<b>YORKE PENINSULA (DC)</b> .....	<b>53</b>
<a href="#">Transport</a> .....	53
<a href="#">Electricity</a> .....	53
<a href="#">Gas</a> .....	54
<a href="#">Water</a> .....	54
<a href="#">Sewerage</a> .....	55
<a href="#">Telecommunications</a> .....	55
<a href="#">Industrial Land</a> .....	56
<a href="#">Waste Management</a> .....	56
<a href="#">Business Services</a> .....	56
<a href="#">Tourism Facilities</a> .....	56
<b><u>SOCIAL INFRASTRUCTURE PROFILE</u></b> .....	<b>58</b>
<b>YORKE REGION</b> .....	<b>58</b>
<a href="#">Service Industries</a> .....	58
<a href="#">Regional Health and Child Care</a> .....	58
<a href="#">Education and Vocational Training</a> .....	58
<a href="#">Cultural, Leisure and Recreation Facilities</a> .....	59
<a href="#">Housing and Land</a> .....	59
<a href="#">Government Services</a> .....	60
<b>BARUNGA WEST (DC)</b> .....	<b>61</b>
<a href="#">Service Industries</a> .....	61
<a href="#">Regional Health and Child Care</a> .....	61
<a href="#">Education and Vocational Training</a> .....	61
<a href="#">Cultural, Leisure and Recreation Facilities</a> .....	62
<a href="#">Housing and Land</a> .....	62
<a href="#">Government Services</a> .....	62
<b>COPPER COAST (DC)</b> .....	<b>ERROR! BOOKMARK NOT DEFINED.</b>
<a href="#">Service Industries</a> .....	<i>Error! Bookmark not defined.</i>
<a href="#">Regional Health and Child Care</a> .....	<i>Error! Bookmark not defined.</i>
<a href="#">Education and Vocational Training</a> .....	<i>Error! Bookmark not defined.</i>
<a href="#">Cultural, Leisure and Recreation Facilities</a> .....	<i>Error! Bookmark not defined.</i>
<a href="#">Libraries</a> .....	<i>Error! Bookmark not defined.</i>
<a href="#">Cultural Services</a> .....	<i>Error! Bookmark not defined.</i>
<a href="#">Sport and Recreation</a> .....	<i>Error! Bookmark not defined.</i>
<a href="#">Housing and Land</a> .....	<i>Error! Bookmark not defined.</i>
<a href="#">Government Services</a> .....	<i>Error! Bookmark not defined.</i>
<b>WAKEFIELD (DC)</b> .....	<b>66</b>
<a href="#">Service Industries</a> .....	66
<a href="#">Regional Health and Child Care</a> .....	66
<a href="#">Education and Vocational Training</a> .....	67

---

---

<i>Cultural, Leisure and Recreation Facilities</i> .....	68
<i>Housing and Land</i> .....	69
<i>Government Services</i> .....	69
<b><u>YORKE PENINSULA (DC)</u></b> .....	70
<i>Service Industries</i> .....	70
<i>Regional Health and Child Care</i> .....	70
<i>Education and Vocational Training</i> .....	71
<i>Cultural, Leisure and Recreation Facilities</i> .....	72
<i>Housing and Land</i> .....	72
<i>Government Services</i> .....	72
<b><u>REGIONAL INFRASTRUCTURE STRENGTHS AND WEAKNESSES</u></b> .....	74
<b><u>YORKE REGION</u></b> .....	74
<i>Strengths</i> .....	74
<i>Weaknesses/Infrastructure Gaps</i> .....	74
<b><u>CONTACT INFORMATION</u></b> .....	76

## **Appendix 1: Regional Maps**

---

## **BACKGROUND AND CONTEXT**

Regional development has emerged in recent years as an important contributor to State and national economic development. Development in the regions has, however, been impeded by a range of infrastructure deficiencies, both economic and social.

Broadly defined for the purposes of this profile, *economic infrastructure* refers specifically to the infrastructure that directly supports industrial development including, for example, power, water, telecommunications, airports, etc.

*Social infrastructure* on the other hand refers to infrastructure generally intended to support communities but is still essential for industrial development to be successful. Such social infrastructure includes health, welfare, tourism and recreation facilities, schools, emergency services, etc.

There is a strong correlation between the development of economic and social infrastructure. Social infrastructure is important to support the needs of communities which provide labour for economic development projects which, in turn, have their own economic infrastructure needs. Without the community development, the labour would not exist to feed economic development. On the other hand, without economic development, there would not be the jobs to support communities and their associated infrastructure.

The purpose of this profile is to provide an overview of the Yorke Region's economic and social infrastructure so that potential investors in industrial, tourism and other economic development projects have appropriate and up-to-date information to assist with assessing the feasibility of projects.



## **THE YORKE REGIONAL DEVELOPMENT BOARD**

The Yorke Regional Development Board was established in 1993 in partnership within the South Australian State Government and the Local Government Authorities in the region including:

- District Council of Barunga West
- District Council of Mallala
- Wakefield Regional Council
- District Council of Yorke Peninsula

The purpose, objectives and functions of the Board are detailed below:

### ***Purpose***

- To achieve sustainable and balanced economic development.

### ***Objectives***

- To encourage, promote, facilitate and monitor the economic development of the region.
- To provide information and advice to promote business development within the region.
- To maximise job creation and improve career opportunities in the region.

### ***Functions***

- To promote the region.

- To identify the opportunities for investment in the region and encourage that investment.
  
- To identify value adding opportunities and encourage growth of industries and employment opportunities within the region.
  
- To identify the infrastructure needs of the region and encourage the provision of that infrastructure.
  
- To promote equitable delivery of services within the region.

*The Board's vision is to optimise the region's economic development opportunities in a manner which maintains the environment and lifestyle of all its people.*

## **REGIONAL OVERVIEW**

### *Geography*

The Yorke Region comprises Yorke Peninsula and the Adelaide Plains, incorporating the following four local government areas:

- District Council of Barunga West
- District Council of Mallala
- Wakefield Regional Council
- District Council of Yorke Peninsula

The District Council of the Copper Coast is also located within this region, but is not a member of the Yorke Regional Development Board.

Appendix 1 contains a map detailing the specific locations of these areas within the Yorke Region.

The region is rich in agricultural and marine resources, and has strong coastal and heritage appeal. The area lies between latitude 33.50 - 35.50 S. and is virtually surrounded by sea with the Spencer Gulf on the west side and Gulf St Vincent. This location favours the area with a reliable Mediterranean-type climate and ready access to export outlets with bulk handling shipping facilities at Wallaroo, Ardrossan and Port Giles (deep-water), although none have container-loading facilities, as well as an inter-modal at Bowmans with a direct rail link to Port Adelaide.

Soils range from light sands to heavy silty loams supporting Mallee-type native vegetation for the most part. The largely undulating topography lies below 300 m altitude, and most is less than 100 m with the highest elevations occurring in the centre of the Peninsula and along the eastern side of the Wakefield Regional Council. The soils are ideal for cultivation but very prone to wind and water

erosion if mismanaged. Microelement deficiency, mainly manganese, in the south of the Peninsula restricted agricultural development until ameliorative treatment was found some 15 years ago. The predominantly winter rainfall (70%) ranges from 300 mm annually at the neck of Gulf St Vincent to over 500 mm around Maitland in the centre of the Peninsula and along the more elevated eastern boundary of the Adelaide Plains, providing an average growing season of 6 months.

Detailed maps of the region, identifying the locations of a range of infrastructure, geographical and socio-economic features, are contained in Appendix 1 and include:

- Hospitals
- Community Health Centres
- Child and Youth Health Centres
- Education
- Mining
- Land Use
- Planning
- Reserves
- Landscapes
- Agriculture
- Transport
- Electricity
- Water
- Telecommunications

### ***Demography***

With a population of more than 40,000, the region is characterised by medium to small towns and a sparsely populated farming community. Encompassing a

coastline of approximately 700 kilometres, and an area of 13,000 square kilometres, the region is bound in the west by Spencer Gulf and in the east by the eastern side of the Adelaide Plains.

### ***Economy***

The Region's prosperity depends mainly on the diversified arable farming activities based on cereal grains, and some oilseeds and pulses, together with livestock. In recent years the pork and poultry industries have boomed across the Adelaide Plains with significant construction of poultry sheds as well as the Primo pork abattoir at Port Wakefield. These are supported by extractive industries such as dolomite, sand mining, salt production and gypsum, while tourism, attracted by the pristine beaches and carefully chosen unique national parks, and small industry also flourish. These industries are supported by several agricultural business centres, including Balaklava, which is 95 kilometres from Adelaide, Maitland, Minlaton, Port Broughton, Two Wells and Mallala.

The region has a healthy and sustainable aquaculture industry, supporting scale fish, prawn, crayfish, crab, abalone and dry land farming enterprises. More recently, oyster farming has emerged as an industry of the future.

### ***Tourism***

The Yorke Peninsula has major appeal as a seaside destination, with good fishing, swimming and water-related activities, as well as offering an opportunity for relaxation and rest.

With some of the best fishing in the State, a high proportion of South Australia's half a million anglers will visit some part of the Yorke Region each year. More than 150,000 tourists a year visit Innes National Park at the southern end of the Peninsula to take in the scenic wonder of the world's oldest and diverse geological formations.

The Samphire Coast, stretching around both sides of Gulf St Vincent from Pt Gawler to Ardrossan, contains sites regarded as the State's third and fourth ranked areas for shorebirds and has been selected as one of ten priority sights as part of the WWF Australian Shorebird Conservation Project.

The Yorke Peninsula Field Days are held at Paskeville biennially in September and comprise one of Australia's largest and oldest agricultural events.

### *Climate*

The region's climate is characterised by cool wet winters and warm, dry summers resulting in a Mediterranean-type climate. Sea surface temperatures in the region reach a mean minimum of 12.4C and a mean maximum of 23.4C. Rain falls mainly during the period April to October with the highest rainfall between June and August. Mean January rainfall is 68 mm. Sea breezes are a persistent feature of the summer climate. Strongest winds are generally from the west.

## **ECONOMIC AND SOCIAL PROFILE**

Detailed *Regional Profiles* for the region have been prepared by the Australian Bureau of Statistics (ABS) and can be viewed at the offices of the Yorke Regional Development Board or the respective District Councils. The *Regional Profiles* contain detailed socio – economic data and trend analyses based on ABS data for the following areas:

- Yorke Region
- District Council of Barunga West
- District Council of Mallala
- Wakefield Regional Council
- District Council of Yorke Peninsula

Each profile contains selected comparison data between the Council areas and the region as a whole.

This section of the profile contains selected data and comparisons for each region. For more detailed data and analyses, please refer to the comprehensive *Regional Profiles* at the Board or Council offices.

***Yorke Region***

This section of the Profile contains selected socio-economic statistics for the Yorke Region sourced from the Australian Bureau of Statistics (ABS). This data is provided for information purposes only and is presented in a range of tables and charts.

<b>Estimated and Projected Population, 1994-2014</b>			
<i>Year</i>	<i>Population</i>	<i>Change from previous period</i>	
	<i>No.</i>	<i>No.</i>	<i>%</i>
1994	31569	-	-
1999	31296	-273	-0.9
2004	31313	17	0.1
2009	30926	-387	-1.2
2014	30466	-460	-1.5

*Source: ABS Estimated Resident and Projected (based on DHAC assumptions) Population*

*(Note: The above population projections do not take into consideration current and planned development projects in the Copper Coast region which are likely to boost regional population by over 1,500 during the next 5 years.)*

<b>Components of Population Change, 1996 - 1999</b>				
	<i>1996</i>	<i>1997</i>	<i>1998</i>	<i>1999</i>
	<i>No.</i>	<i>No.</i>	<i>No.</i>	<i>No.</i>
Births (a)	348	380	333	315
Deaths (b)	341	376	353	351
Natural increase total	7	4	-20	-36
Net migration total	-136	52	-7	-52
<b>Total Population Change</b>	<b>-129</b>	<b>56</b>	<b>-27</b>	<b>-88</b>

*Source: ABS Demography*

**Age Structure, Estimated Resident Population, 1999**

Age	Males	Females	Persons	Persons
	No.	No.	No.	%
0-4	917	904	1821	5.8
5-9	1123	1073	2196	7.0
10-14	1191	1063	2254	7.2
15-19	943	740	1683	5.4
20-24	620	507	1127	3.6
25-29	669	710	1379	4.4
30-34	973	950	1923	6.1
35-39	1122	1125	2247	7.2
40-44	1086	1041	2127	6.8
45-49	1071	1045	2116	6.8
50-54	1095	1058	2153	6.9
55-59	937	979	1916	6.1
60-64	979	999	1978	6.3
65-69	965	944	1909	6.1
70-74	908	821	1729	5.5
75-79	661	709	1370	4.4
80-84	341	432	773	2.5
85+	184	411	595	1.9
<b>Total</b>	<b>15785</b>	<b>15511</b>	<b>31296</b>	<b>100.0</b>

Source: ABS Estimated Resident Population

Footnotes are listed at the back of this Profile.

**Age Structure, Projected Population, 2009**

Age	Males	Females	Persons	Persons
	No.	No.	No.	%
0-4	739	713	1452	4.7
5-9	960	878	1838	5.9
10-14	1107	1024	2131	6.9
15-19	880	767	1647	5.3
20-24	629	534	1163	3.8
25-29	688	638	1326	4.3
30-34	830	774	1604	5.2
35-39	984	986	1970	6.4
40-44	1108	1041	2149	6.9
45-49	1137	1102	2239	7.2
50-54	1130	1082	2212	7.2
55-59	1128	1157	2285	7.4
60-64	1122	1118	2240	7.2
65-69	908	913	1821	5.9
70-74	795	867	1662	5.4
75-79	661	763	1424	4.6
80-84	476	559	1035	3.3
85+	257	471	728	2.4
<b>Total</b>	<b>15539</b>	<b>15387</b>	<b>30926</b>	<b>100.0</b>

Source: ABS Population Projections based on DHAC assumptions

**Employment by Occupation, 1991 and 1996 (a)**

<i>Occupation</i>	1991	1996	<i>% Change</i>
	<i>Persons</i>	<i>Persons</i>	
Managers & Administrators	2821	2526	-10.5
Professionals	935	997	6.6
Associate Professionals	653	1042	59.6
Tradespersons and Related Workers	1251	1275	1.9
Advanced Clerical and Service Workers	376	311	-17.3
Intermediate Clerical, Sales & Service Workers	842	1090	29.5
Intermediate Production & Transport Workers	779	919	18.0
Elementary Clerical, Sales & Service Workers	948	690	-27.2
Labourers and Related Workers	1014	1091	7.6
Inadequately described	61	57	-6.6
Not stated	1214	260	-78.6
<b>Total Employed Persons</b>	<b>10894</b>	<b>10258</b>	<b>-5.8</b>

*Source: ABS Census of Population and Housing*

**Employment by Industry, 1991 and 1996**

<i>Industry</i>	1991	1996	<i>% Change</i>
	<i>Persons</i>	<i>Persons</i>	
Agriculture, Forestry, Fishing	2964	2815	-5.0
Mining	123	110	-10.6
Manufacturing	457	527	15.3
Electricity, Gas and Water Supply	92	59	-35.9
Construction	394	422	7.1
Wholesale Trade	409	537	31.3
Retail Trade	1347	1326	-1.6
Accommodation, Cafes and Restaurants	430	490	14.0
Transport and Storage	330	354	7.3
Communication Services	186	195	4.8
Finance and Insurance	237	210	-11.4
Property and Business Services	217	260	19.8
Government Administration and Defence	404	383	-5.2
Education	674	721	7.0
Health and Community Services	857	963	12.4
Cultural and Recreational Services	52	73	40.4
Personal and Other Services	284	271	-4.6
Non-classifiable	34	91	167.6
Not stated	1400	438	-68.7
<b>Total Employed Persons Aged 15 and Over</b>	<b>10891</b>	<b>10245</b>	<b>-5.9</b>

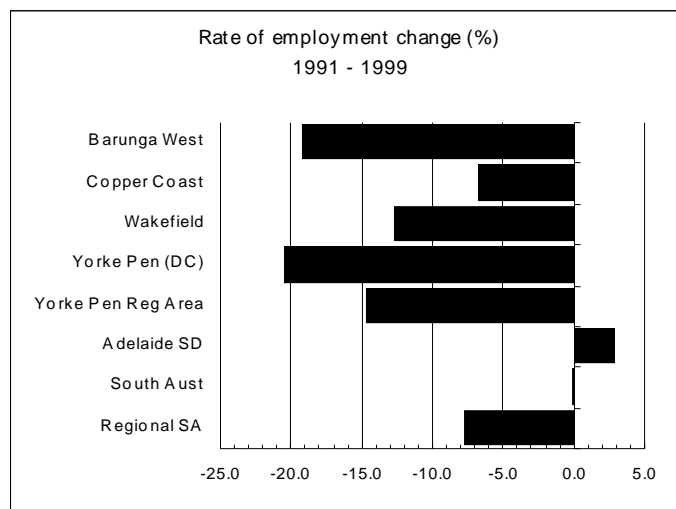
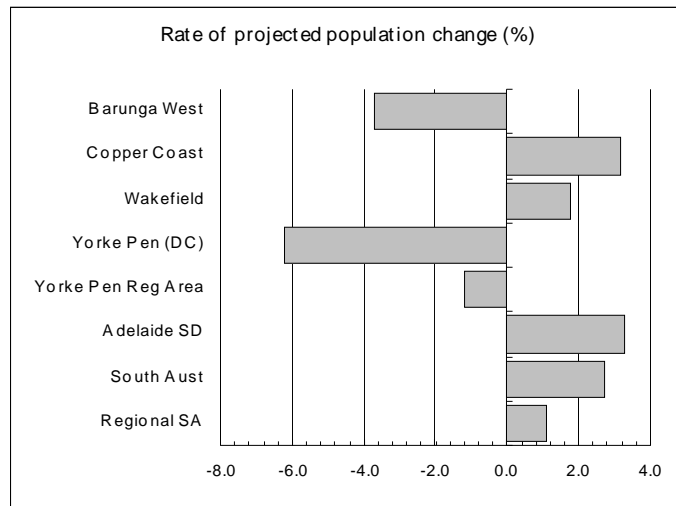
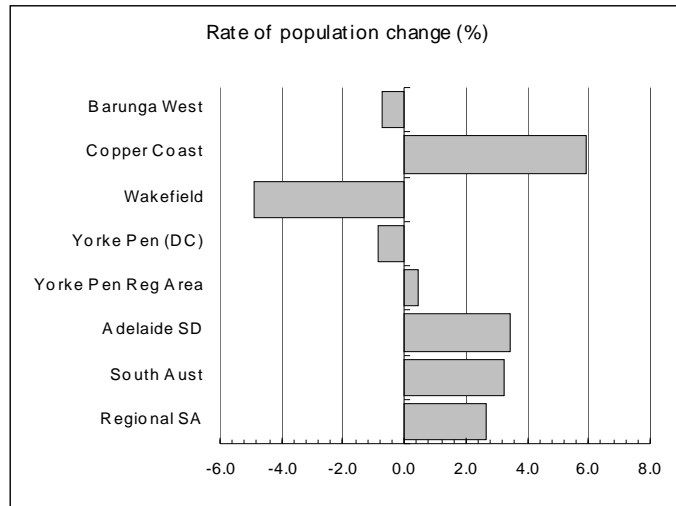
*Source: ABS Census of Population and Housing*

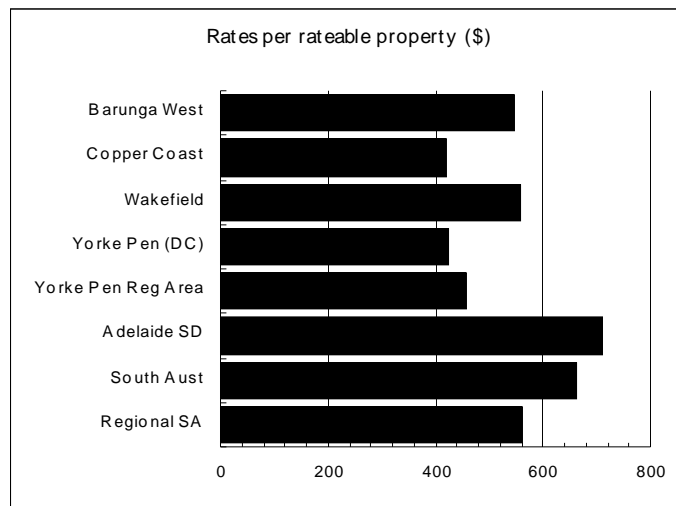
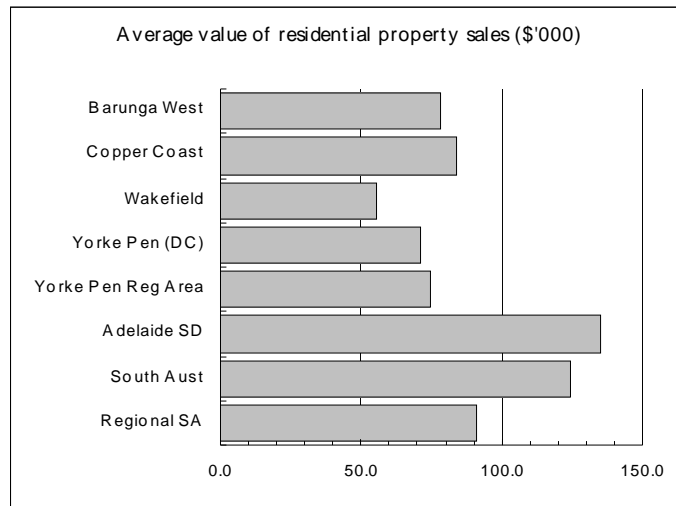
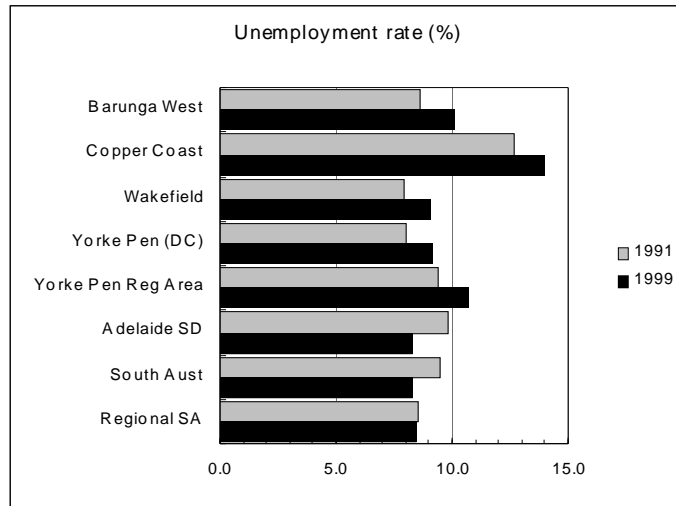
The following map provides a geographical picture of the region's demographic structure.

Source: The Atlas of South Australia - [www.atlas.sa.gov.au](http://www.atlas.sa.gov.au)

Selected Comparisons With LGAs.

<b>Selected Comparisons Between the Region and the LGAs</b>						
	<i>Time Period</i>	<i>Barunga West (DC)</i>	<i>Mallala (DC)</i>	<i>Wakefield (DC)</i>	<i>Yorke Peninsula (DC)</i>	<i>Yorke Peninsula Reg Area</i>
<b>Estimated resident population (no.)</b>	1999	2472.00	10611.00	6499.00	11714.00	31296.00
<b>Rate of population change (%)</b>	91-99	-0.72	5.91	-4.87	-0.84	0.46
<b>Population density (persons/sq km)</b>	1999	1.56	13.73	1.87	1.99	2.66
<b>Proportion of persons aged 0-14 (%)</b>	1999	18.49	19.36	23.48	19.07	20.04
<b>Rate of population change for persons aged 0-14 (%)</b>	91-99	-8.23	1.63	-9.33	-10.39	-6.33
<b>Proportion of persons aged 65+ (%)</b>	1999	19.54	21.53	16.06	21.89	20.37
<b>Rate of population change for persons aged 65+ (%)</b>	91-99	11.55	14.82	5.78	12.95	12.25
<b>Projected population (no.)</b>	2009	2380.00	10945.00	6614.00	10987.00	30926.00
<b>Rate of projected population change (%)</b>	99-09	-3.72	3.15	1.77	-6.21	-1.18
<b>Rate of employment change (%)</b>	91-99	-19.15	-6.77	-12.66	-20.42	-14.73
<b>Unemployment rate (%)</b>	1999	10.07	13.97	9.07	9.11	10.70
<b>Average individual annual taxable income (\$)</b>	1998	28288.17	27559.81	27912.93	27518.68	27683.42
<b>Proportion of homes fully owned (%)</b>	1996	67.32	56.24	53.79	62.81	59.09
<b>Proportion of homes rented (%)</b>	1996	14.64	20.25	16.77	15.28	17.22
<b>New residential dwelling units approved (no.)</b>	1999	18.00	102.00	9.00	82.00	211.00
<b>Value of new residential dwelling units approved (\$m)</b>	1999	1.26	8.24	0.74	5.31	15.55
<b>Value of non-residential building approvals (\$m)</b>	1999	0.22	4.79	6.76	0.58	12.36
<b>Average value of residential property sales (\$'000)</b>	1999	78.26	83.58	55.17	71.43	74.56
<b>Employment (no.)</b>	1997	29.00	(n)	54.00	(n)	317.00
<b>Turnover (\$m)</b>	1997	n.p.	(n)	(n)	(n)	(n)
<b>Total value of agricultural commodities produced (\$m)</b>	1998	48.56	43.58	117.60	137.33	347.07
<b>Rates per rateable property (\$)</b>	1999	547.80	420.47	556.91	424.27	456.94
<b>New motor vehicle registrations (no.)</b>	1999	51	194	160	265	670





### Barunga West (DC)

This section of the Profile contains selected socio-economic statistics for the Barunga West Region sourced from the Australian Bureau of Statistics (ABS). This data is provided for information purposes only and is presented in a range of tables and charts.

#### Estimated and Projected Population, 1994-2014

Year	Population	Change from previous period	
	No.	No.	%
1994	2553	-	-
1999	2472	-81	-3.17
2004	2433	-39	-1.57
2009	2380	-53	-2.18
2014	2334	-46	-1.93

Source: ABS Estimated Resident and Projected (based on DHAC assumptions) Population

#### Components of Population Change, 1996 - 1999

	1996	1997	1998	1999
	No.	No.	No.	No.
Births (a)	26	23	26	23
Deaths (b)	23	13	28	17
Natural increase total	3	10	-2	6
Net migration total	-39	-4	-9	-16
Total Population Change	-36	6	-11	-10

Source: ABS Demography

#### Age Structure, Estimated Resident Population, 1999

Age	Males	Females	Persons	Persons
	No.	No.	No.	%
0-4	61	75	136	5.50
5-9	98	68	166	6.72
10-14	84	71	155	6.27
15-19	92	66	158	6.39
20-24	43	36	79	3.20
25-29	51	55	106	4.29
30-34	71	67	138	5.58
35-39	78	74	152	6.15
40-44	86	82	168	6.80
45-49	86	94	180	7.28
50-54	109	102	211	8.54
55-59	97	88	185	7.48
60-64	76	79	155	6.27
65-69	75	69	144	5.83
70-74	73	49	122	4.94
75-79	61	67	128	5.18
80-84	22	27	49	1.98
85+	13	27	40	1.62
Total	1276	1196	2472	100

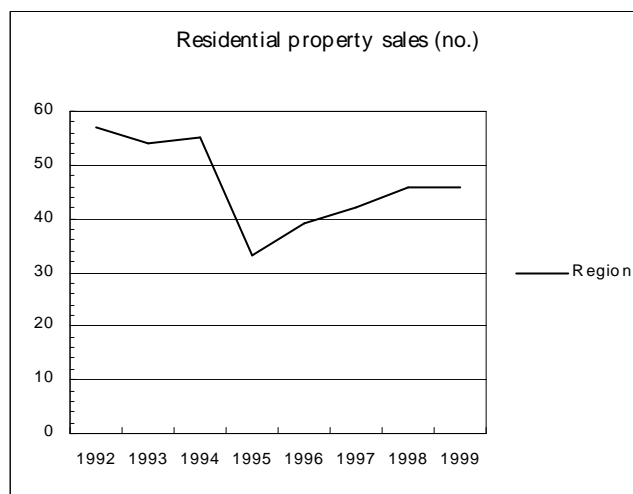
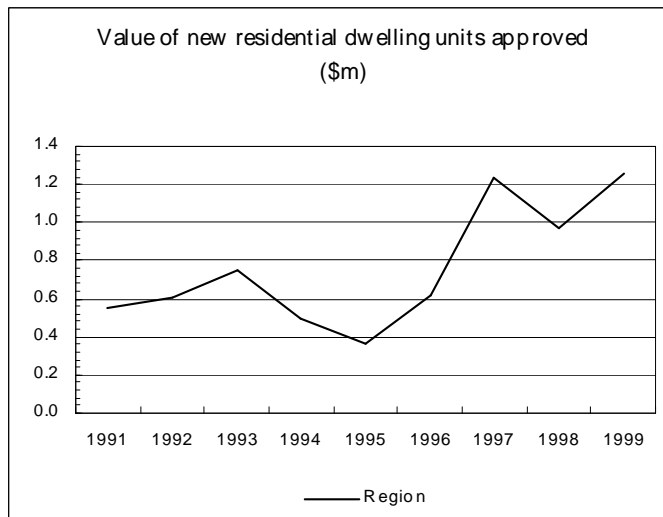
**Employment by Occupation, 1991 and 1996**

<i>Occupation</i>	1991	1996	<i>% Change</i>
	<i>Persons</i>	<i>Persons</i>	
Managers & Administrators	375	317	-15.47
Professionals	61	69	13.11
Associate Professionals	33	61	84.85
Tradespersons and Related Workers	67	85	26.87
Advanced Clerical and Service Workers	28	18	-35.71
Intermediate Clerical, Sales & Service Workers	53	76	43.40
Intermediate Production & Transport Workers	79	70	-11.39
Elementary Clerical, Sales & Service Workers	59	41	-30.51
Labourers and Related Workers	76	106	39.47
Inadequately described	7	6	-14.29
Not stated	93	23	-75.27
<b>Total Employed Persons</b>	<b>931</b>	<b>872</b>	<b>-6.34</b>

**Employment by Industry, 1991 and 1996**

<i>Industry</i>	1991	1996	<i>% Change</i>
	<i>Persons</i>	<i>Persons</i>	
Agriculture, Forestry, Fishing	392	383	-2.30
Mining	3	3	0
Manufacturing	28	34	21.43
Electricity, Gas and Water Supply	0	0	0
Construction	27	33	22.22
Wholesale Trade	32	32	0
Retail Trade	69	66	-4.35
Accommodation, Cafes and Restaurants	39	40	2.56
Transport and Storage	34	29	-14.71
Communication Services	13	19	46.15
Finance and Insurance	17	15	-11.76
Property and Business Services	8	12	50
Government Administration and Defence	22	26	18.18
Education	42	43	2.38
Health and Community Services	58	73	25.86
Cultural and Recreational Services	0	3	0
Personal and Other Services	15	15	0
Non-classifiable	3	7	133.33
Not stated	127	34	-73.23
<b>Total Employed Persons Aged 15 and Over</b>	<b>929</b>	<b>867</b>	<b>-6.67</b>

*Source: ABS Census of Population and Housing*



### *Mallala (DC)*

This section of the Profile contains selected socio-economic statistics for the Mallala Region sourced from the Australian Bureau of Statistics (ABS). This data is provided for information purposes only and is presented in a range of tables and charts.

#### **Estimated and Projected Population, 1994-2014**

Year	Population	Change from previous period	
	No.	No.	%
1994	10238	-	-
1999	10611	373	3.64
2004	10823	212	1.99
2009	10945	122	1.13
2014	11052	107	0.98

Source: ABS Estimated Resident and Projected (based on DHAC assumptions) Population

(Note: The above population projections do not take into consideration current and planned development projects which are likely to boost regional population by over 1,500 during the next 5 years.)

#### **Table 3 - Components of Population Change, 1996 - 1999**

	1996	1997	1998	1999
	No.	No.	No.	No.
Births (a)	104	127	117	101
Deaths (b)	132	148	124	131
Natural increase total	-28	-21	-7	-30
Net migration total	84	132	57	107
<b>Total Population Change</b>	<b>56</b>	<b>111</b>	<b>50</b>	<b>77</b>

Source: ABS Demography

#### **Age Structure, Estimated Resident Population, 1999**

Age	Males	Females	Persons	Persons
	No.	No.	No.	%
0-4	297	294	591	5.57
5-9	348	371	719	6.78
10-14	395	349	744	7.02
15-19	304	248	552	5.20
20-24	196	195	391	3.68
25-29	237	252	489	4.61
30-34	326	333	659	6.21
35-39	399	403	802	7.56
40-44	338	314	652	6.14
45-49	346	333	679	6.40
50-54	333	345	678	6.39
55-59	280	362	642	6.05
60-64	342	386	728	6.86
65-69	341	323	664	6.26
70-74	312	313	625	5.89
75-79	233	272	505	4.76
80-84	142	163	305	2.87
85+	58	128	186	1.75
<b>Total</b>	<b>5227</b>	<b>5384</b>	<b>10611</b>	<b>100</b>

Source: ABS Estimated Resident Population

**Employment by Occupation, 1991 and 1996**

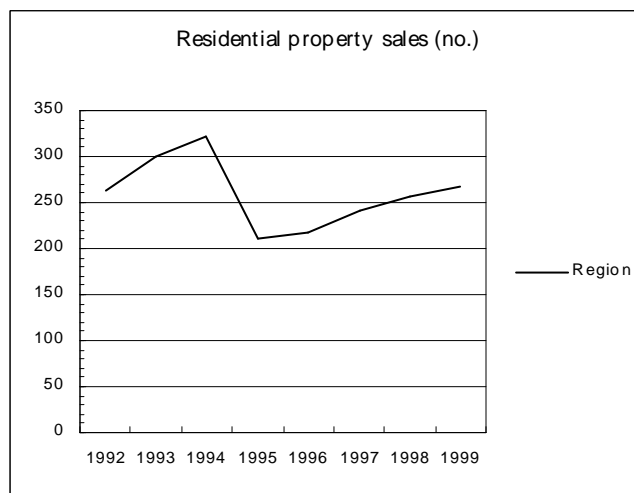
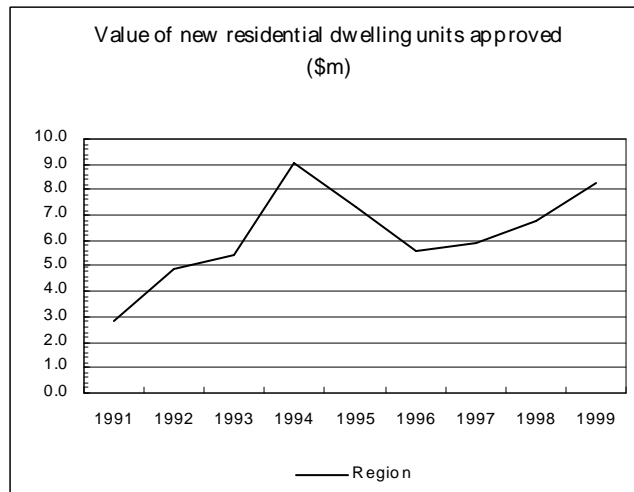
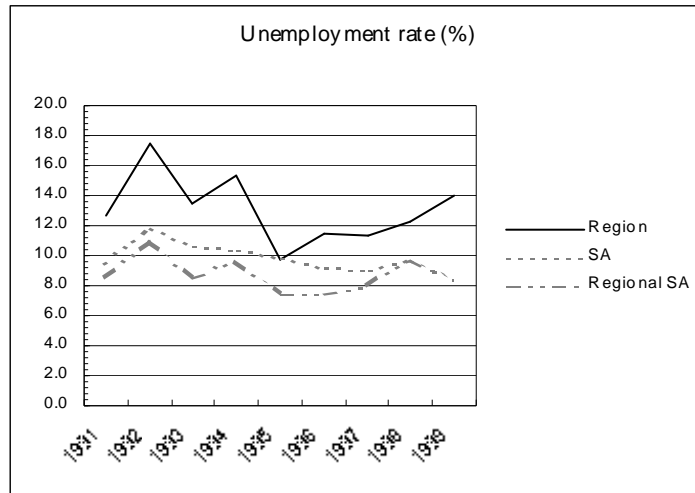
<i>Occupation</i>	1991	1996	<i>% Change</i>
	<i>Persons</i>	<i>Persons</i>	
Managers & Administrators	383	346	-9.66
Professionals	329	357	8.51
Associate Professionals	230	373	62.17
Tradespersons and Related Workers	429	441	2.80
Advanced Clerical and Service Workers	123	97	-21.14
Intermediate Clerical, Sales & Service Workers	349	444	27.22
Intermediate Production & Transport Workers	230	282	22.61
Elementary Clerical, Sales & Service Workers	421	313	-25.65
Labourers and Related Workers	307	330	7.49
Inadequately described	14	14	0
Not stated	380	82	-78.42
<b>Total Employed Persons</b>	<b>3195</b>	<b>3079</b>	<b>-3.63</b>

*Source: ABS Census of Population and Housing*

**Employment by Industry, 1991 and 1996**

<i>Industry</i>	1991	1996	<i>% Change</i>
	<i>Persons</i>	<i>Persons</i>	
Agriculture, Forestry, Fishing	332	328	-1.20
Mining	32	10	-68.75
Manufacturing	198	185	-6.57
Electricity, Gas and Water Supply	33	27	-18.18
Construction	139	160	15.11
Wholesale Trade	160	234	46.25
Retail Trade	517	556	7.54
Accommodation, Cafes and Restaurants	158	166	5.06
Transport and Storage	98	104	6.12
Communication Services	95	121	27.37
Finance and Insurance	85	80	-5.88
Property and Business Services	97	115	18.56
Government Administration and Defence	150	114	-24
Education	203	218	7.40
Health and Community Services	339	359	5.90
Cultural and Recreational Services	21	21	0
Personal and Other Services	115	123	6.96
Non-classifiable	15	35	133.33
Not stated	413	122	-70.46
<b>Total Employed Persons Aged 15 and Over</b>	<b>3200</b>	<b>3078</b>	<b>-3.81</b>

*Source: ABS Census of Population and Housing*



## **Wakefield (DC)**

This section of the Profile contains selected socio-economic statistics for the Wakefield Region sourced from the Australian Bureau of Statistics (ABS). This data is provided for information purposes only and is presented in a range of tables and charts.

### **Estimated and Projected Population, 1994-2014**

Year	Population	Change from previous period	
	No.	No.	%
1994	6878	-	-
1999	6499	-379	-5.51
2004	6698	199	3.06
2009	6614	-84	-1.25
2014	6515	-99	-1.50

Source: ABS Estimated Resident and Projected (based on DHAC assumptions) Population

### **Components of Population Change, 1996 - 1999**

	1996	1997	1998	1999
	No.	No.	No.	No.
Births (a)	89	101	72	75
Deaths (b)	56	78	65	69
Natural increase total	33	23	7	6
Net migration total	-61	-40	-106	-154
Total Population Change	-28	-17	-99	-148

Source: ABS Demography

### **Age Structure, Estimated Resident Population, 1999**

Age	Males	Females	Persons	Persons
	No.	No.	No.	%
0-4	228	221	449	6.91
5-9	290	265	555	8.54
10-14	266	256	522	8.03
15-19	212	168	380	5.85
20-24	170	111	281	4.32
25-29	162	178	340	5.23
30-34	251	236	487	7.49
35-39	243	260	503	7.74
40-44	242	241	483	7.43
45-49	222	230	452	6.95
50-54	202	200	402	6.19
55-59	166	158	324	4.99
60-64	152	125	277	4.26
65-69	154	166	320	4.92
70-74	145	136	281	4.32
75-79	94	113	207	3.19
80-84	41	78	119	1.83
85+	32	85	117	1.80
Total	3272	3227	6499	100

Source: ABS Estimated Resident Population

**Employment by Occupation, 1991 and 1996**

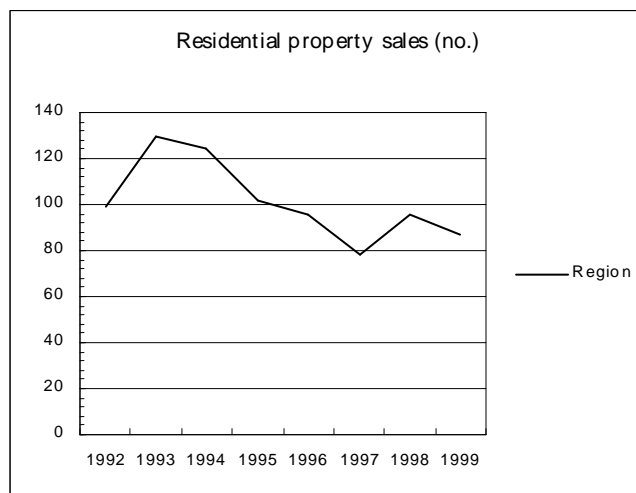
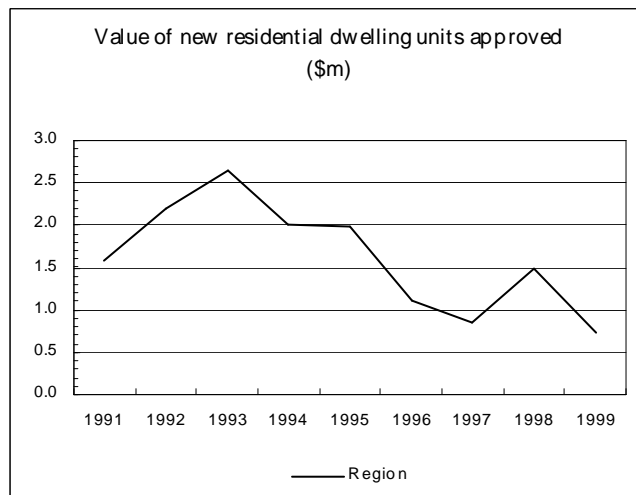
<i>Occupation</i>	1991	1996	<i>% Change</i>
	<i>Persons</i>	<i>Persons</i>	
Managers & Administrators	796	725	-8.92
Professionals	226	213	-5.75
Associate Professionals	152	206	35.53
Tradespersons and Related Workers	270	285	5.56
Advanced Clerical and Service Workers	73	64	-12.33
Intermediate Clerical, Sales & Service Workers	160	222	38.75
Intermediate Production & Transport Workers	171	229	33.92
Elementary Clerical, Sales & Service Workers	173	148	-14.45
Labourers and Related Workers	278	271	-2.52
Inadequately described	28	16	-42.86
Not stated	280	59	-78.93
<b>Total Employed Persons</b>	<b>2607</b>	<b>2438</b>	<b>-6.48</b>

*Source: ABS Census of Population and Housing*

**Employment by Industry, 1991 and 1996**

<i>Industry</i>	1991	1996	<i>% Change</i>
	<i>Persons</i>	<i>Persons</i>	
Agriculture, Forestry, Fishing	864	813	-5.90
Mining	9	3	-66.67
Manufacturing	101	140	38.61
Electricity, Gas and Water Supply	13	7	-46.15
Construction	68	73	7.35
Wholesale Trade	75	129	72
Retail Trade	284	252	-11.27
Accommodation, Cafes and Restaurants	81	102	25.93
Transport and Storage	96	105	9.37
Communication Services	30	19	-36.67
Finance and Insurance	48	38	-20.83
Property and Business Services	45	48	6.67
Government Administration and Defence	114	126	10.53
Education	159	172	8.18
Health and Community Services	200	217	8.5
Cultural and Recreational Services	20	19	-5
Personal and Other Services	63	48	-23.81
Non-classifiable	9	23	155.56
Not stated	331	100	-69.79
<b>Total Employed Persons Aged 15 and Over</b>	<b>2610</b>	<b>2434</b>	<b>-6.74</b>

*Source: ABS Census of Population and Housing*



### **Yorke Peninsula (DC)**

This section of the Profile contains selected socio-economic statistics for the Yorke Peninsula Region sourced from the Australian Bureau of Statistics (ABS). This data is provided for information purposes only and is presented in a range of tables and charts.

#### **Estimated and Projected Population, 1994-2014**

Year	Population	Change from previous period	
	No.	No.	%
1994	11900	-	-
1999	11714	-186	-1.56
2004	11359	-355	-3.03
2009	10987	-372	-3.27
2014	10565	-422	-3.84

Source: ABS Estimated Resident and Projected (based on DHAC assumptions) Population

#### **Components of Population Change, 1996 - 1999**

	1996	1997	1998	1999
	No.	No.	No.	No.
Births (a)	129	129	118	116
Deaths (b)	130	137	136	134
Natural increase total	-1	-8	-18	-18
Net migration total	-120	-36	51	11
Total Population Change	-121	-44	33	-7

Source: ABS Demography

#### **Age Structure, Estimated Resident Population, 1999**

Age	Males	Females	Persons	Persons
	No.	No.	No.	%
0-4	331	314	645	5.51
5-9	387	369	756	6.45
10-14	446	387	833	7.11
15-19	335	258	593	5.06
20-24	211	165	376	3.21
25-29	219	225	444	3.79
30-34	325	314	639	5.45
35-39	402	388	790	6.74
40-44	420	404	824	7.03
45-49	417	388	805	6.87
50-54	451	411	862	7.34
55-59	394	371	765	6.53
60-64	409	409	818	6.98
65-69	395	386	781	6.67
70-74	378	323	701	5.98
75-79	273	257	530	4.52
80-84	136	164	300	2.56
85+	81	171	252	2.15
Total	6010	5704	11714	100

Source: ABS Estimated Resident Population

**Employment by Occupation, 1991 and 1996**

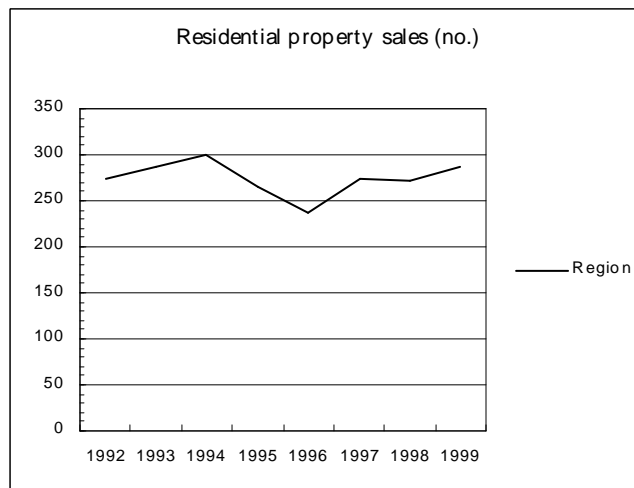
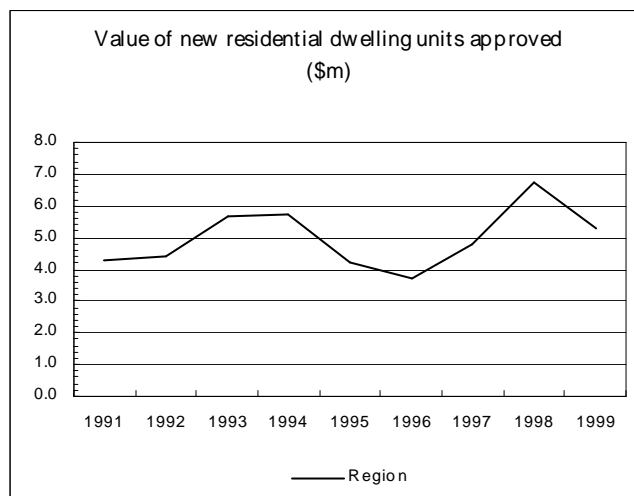
<i>Occupation</i>	1991	1996	<i>% Change</i>
	<i>Persons</i>	<i>Persons</i>	
Managers & Administrators	1267	1138	-10.18
Professionals	319	358	12.23
Associate Professionals	238	402	68.91
Tradespersons and Related Workers	485	464	-4.33
Advanced Clerical and Service Workers	152	132	-13.16
Intermediate Clerical, Sales & Service Workers	280	348	24.29
Intermediate Production & Transport Workers	299	338	13.04
Elementary Clerical, Sales & Service Workers	295	188	-36.27
Labourers and Related Workers	353	384	8.78
Inadequately described	12	21	75
Not stated	461	96	-79.18
<b>Total Employed Persons</b>	<b>4161</b>	<b>3869</b>	<b>-7.02</b>

*Source: ABS Census of Population and Housing*

**Employment by Industry, 1991 and 1996**

<i>Industry</i>	1991	1996	<i>% Change</i>
	<i>Persons</i>	<i>Persons</i>	
Agriculture, Forestry, Fishing	1376	1291	-6.18
Mining	79	94	18.99
Manufacturing	130	168	29.23
Electricity, Gas and Water Supply	46	25	-45.65
Construction	160	156	-2.5
Wholesale Trade	142	142	0
Retail Trade	477	452	-5.24
Accommodation, Cafes and Restaurants	152	182	19.74
Transport and Storage	102	116	13.73
Communication Services	48	36	-25
Finance and Insurance	87	77	-11.49
Property and Business Services	67	85	26.87
Government Administration and Defence	118	117	-0.85
Education	270	288	6.67
Health and Community Services	260	314	20.77
Cultural and Recreational Services	11	30	172.73
Personal and Other Services	91	85	-6.59
Non-classifiable	7	26	271.43
Not stated	529	182	-65.60
<b>Total Employed Persons Aged 15 and Over</b>	<b>4152</b>	<b>3866</b>	<b>-6.89</b>

*Source: ABS Census of Population and Housing*



## **ECONOMIC INFRASTRUCTURE PROFILE**

### *Yorke Region*

#### *Transport*

The Yorke Region is served by a well-developed transport network with main roads sealed and well maintained minor gravel roads.

There are no freight or passenger rail services on Yorke Peninsula. However, Wakefield Regional Council is traversed by the national Sydney - Perth line and the State rail network that connects grain silos at Balaklava, Bowmans, Owen, Nantawarra and Long Plains to Adelaide.

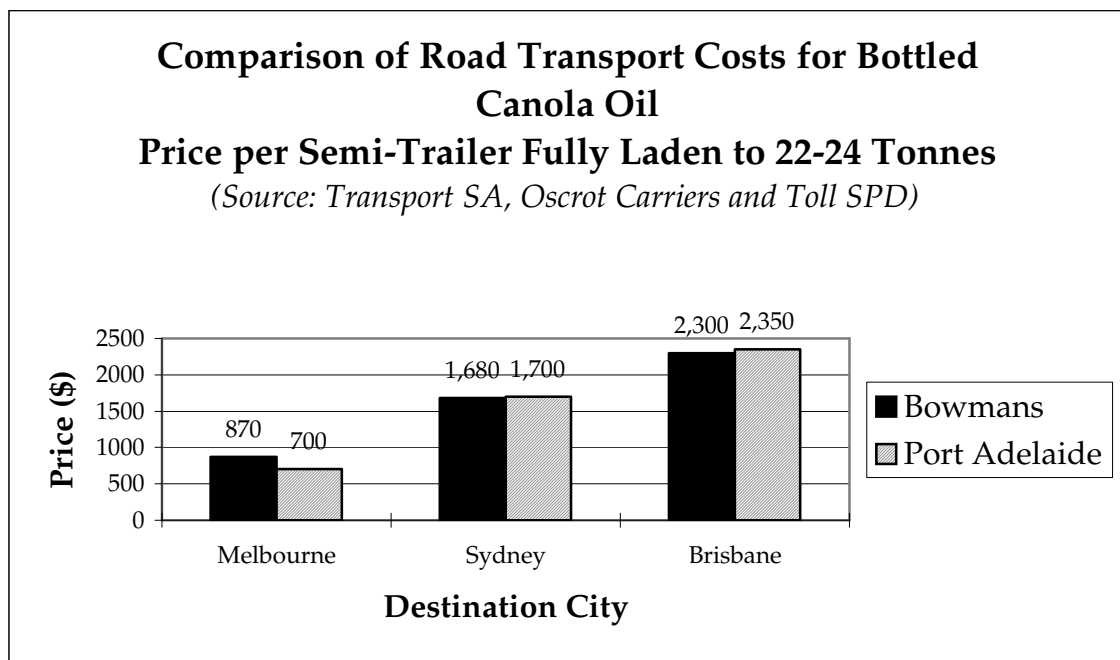
There are 25 road freight companies in the area mainly servicing the grains industry. Bulk grain handling facilities are located at the deep-water ports of Ardrossan and Port Giles which receive regular shipping services for the collection and export of grain. Heavy vehicle movements are seasonally biased with most activity occurring during the grain harvest season. Transport to and from mining operations also contributes significantly to heavy vehicle movements across the Peninsula.

There is good access to sealed arterial roads on the Peninsula and the coastal route on the eastern side of the Peninsula is suitable for heavy vehicle access to and from the main ports.

Transport costs in and from the region are very competitive. For example, from Bowmans (near Balaklava) to Sydney, Brisbane and Melbourne compares favourably with an alternative site in Adelaide. Bowmans has price advantages for Brisbane and Sydney of \$50 and \$20 respectively per 22 tonnes semi-trailer, while it has a disadvantage to Melbourne of \$170 per 22 tonnes semi-trailer caused by its extra distance from this market.

The chart on the following page compares road transport costs from Bowmans and Adelaide to the eastern markets of:

- Melbourne
- Sydney
- Brisbane



The comparisons are made on the basis of the price per semi-trailer, fully laden with 22 - 24 tonnes. However, it is important to note that the rates quoted are not competitive and that lower rates could be negotiated by users on a competitive basis.

Bowman's price advantage over Adelaide for transport to both Brisbane and Sydney, the largest consumer market, reflects a shorter haul and Bowman's closer proximity to national east - west transport corridors.

The region also has several strategically located airstrips which predominantly service charter and private aircraft.

Appendix 1 contains a detailed map indicating the location of all transport modes in the region including:

- Roads
- Railways
- Airports/airstrips

### *Electricity*

ETSA Utilities constructs, maintains and manages the electricity distribution system in South Australia with extensive systems covering Yorke Peninsula and the Adelaide Plains.

The region is supplied from the Port Augusta Power Station via the Hummocks sub-station north-west of Port Wakefield. A 132kV transmission line runs to the Ardrossan West sub-station which then serves the majority of the Peninsula.

The Ardrossan sub-station feeds three 33kV lines which service the district via smaller 11kV and 19kV lines. The majority of the region is supplied with electricity, although many areas receive only single phase supply (19kV) and lack three phase supply (11kV and 33kV) required by heavy commercial and industrial users.

Appendix 1 contains detailed maps of the region identifying the following in relation to electricity supply:

- 275kV and 132kV transmission line
- 66kV and 33kV transmission line
- 19kV transmission line
- ETSA Utilities depots
- ETSA Utilities line personnel locations



### *Gas*

The Epic Natural Gas Supply Line is geographically close to urban centres in the Adelaide Plains but there is currently no supply infrastructure. There are also no gas distribution systems on Yorke Peninsula.

### *Water*

The region has the following three main water sources:

- The River Murray
- Groundwater
- Rainwater

The region's major water supply is provided from the River Murray via the Bundaleer and Warren Trunk Mains interconnecting at Paskeville. Supply is retained in two major storages, the upper and lower Paskeville Reservoirs.

The principal trunk main runs through the middle of the Peninsula and terminates south of Yorketown. The majority of coastal settlements are supplied with water through distribution mains which connect the trunk mains and tanks to the various water districts.

The existing water distribution network is illustrated in more detail on the local government area maps contained in Appendix 1. These maps, produced by the South Australian Water Corporation, are specially developed A3 plots of the region which contain:

- Water mains
- Water transmission systems
- Water tanks

- Reservoirs
- Towns

In addition to the above, extensive detailed plots have been generated from spatial data held by SA Water in the Digitised Facilities Information System (DFIS). Overall coloured plots, and 1:2500 plots delineating each area in more detail, have been produced for each of the following townships:

- Yorketown
- Maitland
- Port Broughton

These maps are available upon request from the Yorke Regional Development Board.

The following general map details the South Australian water reticulation network incorporating that for the Yorke Region. The red lines indicate major trunk systems and the blue lines general water mains.

It is generally agreed that a lack of water to strategic sites is inhibiting development throughout the region, especially tourism projects. Studies have been initiated to identify and evaluate new and alternative water sources for the region including, for example:

- Desalination including small scale solar desalination
- Treated stormwater and effluent
- Fresh groundwater
- Haulage of water
- Local wells and bores
- Upgrade of existing systems

- Provision of new systems
- Aquifer storage and recovery (eg: from roof water collection)

### *Sewerage*

Most towns in the Yorke Region are serviced by common effluent systems the details of which are contained in the respective sections of this profile.

### *Telecommunications*

#### GENERAL

A report prepared for the Yorke Regional Development Board in 1999 by Gibson Quai & Associates found that the Yorke Peninsula and the Wakefield region is relatively well served for backbone infrastructure by Telstra. Much of the information in this section has been sourced from the report which is available on request from the Board.

The infrastructure operated by non Telstra Carriers is primarily for mobile telephone systems and satellite systems. The Optus Perth to Adelaide optic fibre cable passes through the Region, however it is not used by them for local service delivery in the region.

Telstra provides a reasonable coverage of core telecommunications infrastructure and standard telecommunication services in the Region. This is particularly the case with the roll-out of the Future Mode of Operations (FMO) program, which includes increasing the use of Optic Fibre transmission in the Telstra network and upgrading exchanges from analogue to the latest digital standards. This will enable Telstra to offer the more advanced digital services such as ISDN at each exchange.

The outcome of this program has meant that an increasing number of customers in the Yorke Peninsula and the Adelaide Plains now have the ability to receive the full range of services available from Telstra, from Value Added PSTN Easy Call services, to the new ETSI ISDN standard.

In regard to other telecommunication carriers, Optus have focused their penetration into the Region on Mobile Telephony and long distance calls. However, through the use of Telstra infrastructure, Optus can provide a full suite of voice and data telecommunications services, using terrestrial based infrastructure wherever Telstra infrastructure.

#### LOCAL ACCESS NETWORK

Generally, Telstra's existing network of exchanges and switching centres throughout the Region provide telephone service access to a majority of the Yorke Peninsula and Adelaide Plains population.

With the rapid increase in demand for data services for accessing the Internet, as well as remote access for Home Offices, Telstra has seen the need to increase the dimensioning of the Access Network. It has been increased over the past 5 years from 1.5 pairs to 2 pairs of copper cable per domestic lot. This has been done through an increase in copper cable installed in each distribution area, as well as using technologies such as RIMs.

For more remote locations Telstra make use of a Wireless Local Loop, or radio, solutions such as the Digital Radio Concentrator System (DRCS). This is a "line-of-sight", point-to-point service back to an appropriate exchange. Other than Telstra, there is currently no other provider of Local Access Network infrastructure in the region. Optus has no Access Network infrastructure to connect direct with customers, except mobile telephone and satellite. Access to the Optus network can only be done via Telstra, hence customers are required

to have a connection to Telstra to have traditional telephony and communications services.

#### NETWORK INFRASTRUCTURE

Optic Fibre digital transmission is extensively used by Telstra in the Inter-Exchange Network (IEN) throughout the Region. This infrastructure is capable of supporting any increase in higher bandwidth services, such as ISDN etc. without any difficulties.

Optic Fibre systems have also been used in the implementation of Remote Integrated Multiplexors (RIMs).

Telstra have announced a current plan to further upgrade the core network, to cater for future services and technology development. This program is known as DMO (Data Mode of Operation), and relates to the migration of voice and telephony services over data platforms, and the increased use of Internet technology and Internet Protocols. At present Telstra are reviewing and assessing bids by network suppliers, with an aim to select a prime contractor within the next month to design, deliver and implement the DMO program over the next 5 years.

#### ISDN AND DATA SERVICES

With the FMO network upgrade and the increasing use of intelligent access network components (ie RIMs), the advanced data services offered by Telstra are available in most locations throughout the Region. However there are likely to be some areas where access to these services is not currently possible due to either the locations distance from the Telstra exchange and/or the unavailability of the service at the exchange.

Telstra's ISDN OnRamp product is based on the international ETSI ISDN standard. In general ETSI ISDN can be provided up to 5 km from the exchange,

with the actual distance being dependant on the size and quality of copper cable installed in the access network.

#### MOBILE SERVICES

Telstra, Optus and Vodafone have established mobile phone infrastructure in the Yorke Peninsula and the Adelaide Plains

.

Telstra offers the most extensive mobile telephone service coverage in the Yorke Peninsula and the Adelaide Plains via GSM digital mobile telephone networks.

While Optus and Vodafone provide GSM digital coverage of the Yorke Peninsula and the Adelaide Plains, coverage is focused along Highway 1 and the Northern Yorke Peninsula. Optus has indicated that it plans to extend its GSM digital network to various locations on the Yorke Peninsula.

Optus and Vodafone use a mix of Telstra Megalink services and private radio links to connect the base stations to the GSM network. Optus and Vodafone have also reached an agreement, in many cases, to share infrastructure and inter-base station capacity, which tends to have the two networks providing the same or similar coverage levels.

#### NEW CDMA DIGITAL MOBILE TECHNOLOGY

Late in 2000 Telstra announced that it would introduce a new national mobile phone network which will be based on Code Division Multiple Access (CDMA) technology and which could provide coverage distances similar to the recently closed analogue network. Rollout of the CDMA network has commenced in regional South Australia.

#### SATELLITE SERVICES

Satellite technology offers an alternative to terrestrial based fixed and mobile telecommunication services. Due to the nature of satellite technology, the whole of the Yorke Peninsula and the Adelaide Plains has access to a number of satellite services. These provide for a range of services from broadcast services to telephony and data services. However until recently satellite services tended to be relatively expensive when compared to similar terrestrial standard telephony services.

In regard to satellite mobile phone services, there are a number of new satellite mobile phone providers such as Iridium and Globalstar.

New dual-mode handsets will enable users to access the “terrestrial” GSM digital networks when in range and the satellite network when out of range of the terrestrial networks – all on the one handset.

Telstra offer MiniSat, a personal digital satellite telephone, smaller than a laptop computer, offering voice, fax and data from virtually anywhere on earth. MiniSat is a personal mobile satellite communication service that utilises a new generation of satellites that enable the MiniSat terminal to be used anywhere because of it’s small size and it’s light weight at just over 2 kilograms.

Optus and AAPT also offer fixed satellite services. Optus’ satellite services are based on the original service known as “AUSSAT”.

#### INTERNET SERVICES

The Internet has the largest growth rate, in terms of infrastructure development and roll-out, as well as the acceptance and subscription by users.

Currently there are only a limited number of local Internet Service Providers (ISPs) in the region. However this is likely to change as the major Carriers

increase the reach of their Internet service offerings, which include services to cater specifically for regional customers.

Telstra offer an Internet Service known as Big Pond and are progressively expanding their regional points of presence. Optus offer a national Internet service which has been increased in recent times with respect to the services offered. Optus have also recently acquired a large national ISP, Microplex, to increase both the Optus Internet presence, as well as make use of successful home user retail marketing plans.

The following map and other maps contained in Appendix 1 detail the Telstra telecommunications network throughout South Australia including the Yorke Region.

The red and blue lines on the above map indicate high capacity, most of which is optical fibre. The detailed maps contained in Appendix 1 indicate the following infrastructure for the region:

- Optical fibre (existing and proposed)
- Intercapital optical fibre existing and proposed)
- Microwave radio (existing and proposed)
- Digital radio concentrator system
- High capacity radio concentrator (existing and proposed)
- Radio repeater stations
- Major radio system terminals
- Major transmission access points
- Local transmission hubs
- Main transition hubs
- Satellite earth stations
- Submarine cable
- Mobile telephone coverage

Optus and Vodafone also have established mobile phone infrastructure in the Yorke Peninsula and the Wakefield region.

With the closure of the analogue mobile phone network, mobile phone users will have a choice of digital networks available to them - Optus, Vodafone and Telstra are all continuing to expand their GSM digital mobile phone networks, while Telstra will be introducing a new digital mobile phone network based on CDMA technology. The region has three local Internet servers for local call access including REB, Net YP and Microsystems.

Optus networks are also detailed in Appendix 1.

### *Industrial Land*

Low cost industrial land is abundant throughout the Yorke Region with details being available in each Council region's Development Plan and in the respective sections of this profile.

#### *Waste Management*

Waste management is generally the responsibility of each Council with all areas having suitable waste management strategies details of which are contained in the respective sections of this profile.

#### *Business Services*

Business services, including banking, finance, accounting, legal and internet services are available throughout the region in towns that have developed specifically to service the rural businesses and communities. Further details are contained in the respective sections of this profile.

#### *Tourism Facilities*

The Yorke region's coastline is a prime attraction for many tourists each year who visit for fishing, surfing, diving, boating and swimming. Tourists are accommodated by a variety of accommodation styles including over 25 caravan parks and many motels and hotels. The region also has excellent jetties and boat ramp facilities for local residents and tourists.

Further details of facilities by local government area are contained in the respective sections of this profile.

## ***Barunga West (DC)***

### *Transport*

The main means of transport into the region is road. Port Broughton and Bute are the region's principal business and administrative centres and are only 1 –2 hour's drive from Adelaide. The region has excellent sealed roads connecting it to Adelaide, Wakefield Plains and Yorke Peninsula. An extensive network of sealed arterial roads linking local townships supports these roads.

There are several freight companies in the area mainly servicing the grains industry. Heavy vehicle movements are seasonally biased with most activity occurring during the grain harvest season.

The Wallaroo to Snowtown railway runs through the region with a station at Bute. Only a tourism service operates between Wallaroo and Bute.

Appendix 1 contains a detailed map indicating the location of all transport modes in the region including:

- Roads
- Railways
- Airports/airstrips

### *Electricity*

The area is provided with a reticulated electricity supply via ETSA Utilities distribution system. The region is supplied from the Port Augusta Power Station via the Hummocks sub-station north-west of Port Wakefield.

Appendix 1 contains detailed maps of the region identifying the following in relation to electricity supply:

- 275kV and 132kV transmission line
- 66kV and 33kV transmission line
- 19kv transmission line
- ETSA Utilities depots
- ETSA Utilities line personnel locations

#### *Gas*

There is no gas reticulation system available in the region.

#### *Water*

The region's water supply is provided from the River Murray via the Bundaleer and Warren Trunk Mains interconnecting at Paskeville. The existing water distribution network is illustrated on the local government area maps contained in Appendix 1. These maps, produced by the South Australian Water Corporation, are specially developed A3 plots of the region which contain:

- Water mains
- Water transmission systems
- Water tanks
- Reservoirs
- Towns

#### *Sewerage*

The major towns of Port Broughton and Bute are serviced by septic tank effluent disposal (S.T.E.D.) schemes.

### *Telecommunications*

The region is relatively well served for backbone infrastructure by Telstra. Telstra provides a sound coverage of core telecommunications infrastructure and standard telecommunication services in the region.

The detailed maps contained in Appendix 1 indicate the telecommunication's infrastructure in the region. The Council is currently working with Telstra and the Central Region of Local Government to look at introducing to the Council area.

### *Industrial Land*

Low cost industrial land is available in the region with details being available in Council's Development Plan.

### *Waste Management*

The District Council has four landfill sites located at:

- Port Broughton
- Alford
- Bute
- Kulpara

### *Business Services*

The principal towns of Port Broughton and Bute offer a range of business services to the local and visiting communities.

(A) Rural Transactions Centres are (is) located in the District Council offices at Port Broughton which includes an on-line banking facility, and Bute with the

Australia Post outlet.

Business services in the region include:

- Commodity transportation, handling and storage services and facilities
- Many freight carriers
- Engineering firms
- Farm industries suppliers
- Property management services

#### *Tourism Facilities*

The Barunga West area has a range of tourism facilities including 3 caravan parks, 3 hotels/motels and a number of farms offering farm stay accommodation. Bute's Railway Reserve along with the foreshore areas at Port Broughton and Fisherman's Bay offer good facilities for tourists (BBQs, toilets, shops, etc.)

The region also has excellent jetties and boat ramp facilities for local residents and tourists. Boat ramps are located at Port Broughton, Fisherman's Bay and Tickera.

## ***Wakefield (DC)***

### *Transport*

The main means of transport into the region is road. National Highway 1 transverses the region providing a major north – south transport link. Balaklava, the region’s principal business and administrative centre, is only 92km or one hour’s drive from Adelaide. It has excellent sealed roads connecting it to Adelaide, the Mid-North and Yorke Peninsula. The Auburn to Port Wakefield road and the Clare to Brinkworth to Snowtown road provide access across the region west to east and the eastern seaboard. The Kadina to Wallaroo road starts at Port Augusta for travellers to Yorke Peninsula. An extensive network of sealed arterial roads linking local townships supports these roads.

The national railway line runs through the region and within 12 kilometres of Balaklava.

The national highway dissects the town of Port Wakefield which results in significant employment opportunities associated with serving the highway users.

The region’s proximity to Adelaide provides for very competitive freight costs. There are several local heavy transport operators also able to take advantage of the region’s access to the national highway.

Light aircraft landing strips are available at the gliding club and at the racecourse.

Appendix 1 contains a detailed map indicating the location of all transport modes in the region including:

- Roads
- Railways
- Airports/airstrips

### *Electricity*

Balaklava is served by 33kV electricity fed from sub-stations at the Hummocks and Brinkworth.

Large reserves of coal exist within the Bowmans/Lochiel district which, if developed could create potential for a new power station in the district. There would also be potential for gasification.

### *Gas*

The main Moomba to Adelaide natural gas pipeline runs through the region on the eastern side of Balaklava.

### *Water*

The region's major water supply is provided from the River Murray via the Warren Trunk Main. Mains water is provided via a 375mm spur from the trunk main with an extensive reticulation system. The existing water distribution network is illustrated on the local government area maps contained in Appendix 1. These maps, produced by the South Australian Water Corporation, are specially developed A3 plots of the region which contain:

- Water mains
- Water transmission systems
- Water tanks
- Reservoirs
- Towns

Good quality groundwater is also available within the region.

#### *Sewerage*

A common effluent system services the towns of Balaklava (with the pond system located to the east of the city), Blyth, Hamley Bridge, Port Wakefield (part) and Snowtown.

All towns have excellent solid waste disposal capacity.

#### *Telecommunications*

The region is relatively well served for backbone infrastructure by Telstra. Telstra provides a sound coverage of core telecommunications infrastructure and standard telecommunication services in the region.

The detailed maps contained in Appendix 1 indicate the telecommunication's infrastructure in the region.

#### *Industrial Land*

Industrial development within the region focuses on the main township of Balaklava and, to a lesser extent, the townships of Blyth, Brinkworth, Hamley Bridge, Owen, Port Wakefield and Snowtown. Light industrial zones are located at the existing sites for bulk grain handling in Balaklava, Hamley Bridge, Owen, Brinkworth and Snowtown.

Significant industrial land is available on the southern edge of Balaklava which is capable of handling any future demands. The site is open and is also used for cropping and grazing.

While low key industry can occur in other towns, Balaklava is the preferred site for significant industrial activities.

In the future, there are expected to be significant regional opportunities for the value-adding to agricultural product.

#### *Waste Management*

The District Council has transfer stations located at Balaklava and near Hamley Bridge and Port Wakefield. There are two landfill sites located at:

- Owen
- Blyth

#### *Business Services*

General business services, light and general industries have been established in the region to support the agricultural base of the district. Balaklava is the largest urban centre and serves as the region's administrative base and business centre. It provides most of the local services and facilities required by the district's population and visitors to the area. Major business services include:

- Contract harvesters
- Grain haulage
- Electrical services
- Fuel depots
- General engineering
- Automotive and machinery retailers

#### *Tourism Facilities*

Tourism, heritage and settlement features associated with the region's

townships play an important role in maintaining the economic base of the region. The region has caravan parks in the following three locations:

- Balaklava
- Port Wakefield
- Snowtown

## *Yorke Peninsula (DC)*

### *Transport*

There are several freight companies in the area mainly servicing the grains industry. Bulk grain handling facilities are located at the deep-water ports of Ardrossan and Port Giles which receive regular shipping services for the collection and export of grain. Heavy vehicle movements are seasonally biased with most activity occurring during the grain harvest season. Transport to and from mining operations also contributes significantly to heavy vehicle movements across the Peninsula.

There is good access to sealed arterial roads on the Peninsula and the coastal route on the eastern side of the Peninsula is suitable for heavy vehicle access to and from the main ports.

Appendix 1 contains a detailed map indicating the location of all transport modes in the region including:

- Roads
- Railways
- Airports/airstrips

### *Electricity*

The area is provided with a reticulated electricity supply via ETSA Utilities distribution system. The region is supplied from the Port Augusta Power Station via the Hummocks sub-station north-west of Port Wakefield. A 132kV transmission line runs to the Ardrossan West sub-station which then serves the majority of the Peninsula.

The Ardrossan sub-station feeds three 33kV lines which service the district via

smaller 11kV and 19kv lines. The majority of the region is supplied with electricity, although many areas receive only single phase supply (19kV) and lack three phase supply (11kV and 33kV) required by heavy commercial and industrial users.

Appendix 1 contains detailed maps of the region identifying the following in relation to electricity supply:

- 275kV and 132kV transmission line
- 66kV and 33kV transmission line
- 19kv transmission line
- ETSA Utilities depots
- ETSA Utilities line personnel locations

#### *Gas*

There is no gas reticulation system available in the region.

#### *Water*

Yorke Peninsula's water supply is provided from the River Murray via the Bundaleer and Warren Trunk Mains interconnecting at Paskeville. Supply is retained in two major storages, the upper and lower Paskeville Reservoirs.

The principal trunk main runs through the middle of the Peninsula and terminates south of Yorketown. The majority of coastal settlements are supplied with water through distribution mains which connect the trunk mains and tanks to the various water districts.

Warooka, Point Turton and associated country lands are supplied with groundwater from bores into the Para Wurlie Basin. The bores are located 20km west of Warooka and supply a network of mains which is independent from the

main regional supply system.

The existing mains water distribution network is illustrated on the local government area maps contained in Appendix 1. These maps, produced by the South Australian Water Corporation, are specially developed A3 plots of the region which contain:

- Water mains
- Water transmission systems
- Water tanks
- Reservoirs
- Towns

More detailed information regarding Yorke Peninsula's water resources obtained in a recent Water Resources Study is available on request from the District Council office

#### *Sewerage*

Common effluent disposal systems or septic tank effluent disposal systems (STEDS) are provided at Ardrossan, Maitland, Yorketown and Black Point. Systems are also in place at all freehold shack site areas. The District Council is looking at establishing similar systems at larger coastal settlements such as Port Vincent and Stansbury. Other towns rely on site septic tank disposal of effluent.

#### *Telecommunications*

The region is relatively well served for backbone infrastructure by Telstra. Telstra provides a sound coverage of core telecommunications infrastructure and standard telecommunication services in the region.

The detailed maps contained in Appendix 1 indicate the telecommunication's

infrastructure in the region.

### *Industrial Land*

Much of the existing industrial land in the Yorke peninsula region is located around established major activities and it is recognised that additional land is needed for small scale and service industries. New industrial zones have been created in Ardrossan which has assisted both the creation of new industries and relocation of inappropriately located industries. The District Council is now looking to create additional industrial zones with a view to further industrial development.

### *Waste Management*

The District Council has three landfill sites located at:

- Arthurton
- Port Vincent
- Warooka

### *Business Services*

General business services, light and general industries have been established in the region to support the agricultural base of the district. Maitland serves as the region's main administrative base and business centre. Most of the local services and facilities required by the district's population and visitors to the area are provided from the four main centres of Maitland, Minlaton, Yorketown and Warooka.

### *Tourism Facilities*

Hotels, motels, flats/units, houses, bed and breakfast, host farm accommodation and caravan parks cater for the majority of tourists to the region. There are 24 caravan parks located throughout the region including the following sites:

- Ardrossan
- Balgowan
- Black Point
- Coobowie
- Edithburgh
- Marion Bay
- Minlaton
- Pine Point
- Price
- Port Clinton
- Point Turton
- Stansbury
- Port Victoria
- Port Vincent
- Yorketown
- Wool Bay

## **Social Infrastructure Profile**

### *Yorke Region*

#### *Service Industries*

From first settlement by pastoralists in 1836, the Yorke Region quickly developed on a base of cereal production, supplemented by copper mining activity around Wallaroo, and is now consolidated with a soundly established business and services infrastructure centred at Kadina in the Copper Coast area and supported by a number of towns throughout the region.

#### *Regional Health and Child Care*

The region is well serviced by health and child care facilities. Appendix 1 contains a regional map which details the locations the following facilities throughout the region:

- Public and Private Hospitals
- Community Health Centres
- Child Health Centres
- Youth Health Centres

#### *Education and Vocational Training*

The Yorke Region has a school located in most townships, with most secondary schools being an Area School. The Yorke Peninsula has two campuses of the Spencer Institute of TAFE, located at Kadina and Yorketown.

Appendix 1 contains a regional map which details the following education facilities in the region:

- Public Primary Schools
- Public Secondary Schools
- Private Schools
- TAFE Campuses
- Aboriginal Schools

#### *Cultural, Leisure and Recreation Facilities*

The region abounds with cultural, leisure and recreation facilities for use by residents and tourists alike. In addition to a range of public amenities such as swimming pools, golf courses, reserves, etc. there are a variety of sites of significant historical value including the Wheel Hughes Copper Mine, Moonta Mines State Heritage Area, Matta House Museum, Inneeston Township, Maritime Heritage Trail, Wallaroo Heritage and Nautical Museum, Port Victoria Jetty and Historical Centre and the township of Balaklava with its 'Silent Cop'.

The Yorke Region is also host to the world's largest Cornish festival centred on the towns of Kadina, Wallaroo and Moonta or as it is known among the locals 'Little Cornwall' . The Kernewek Lowender festival celebrates this proud heritage and that of the early settlers who made their living in the nearby copper mines. Much of the handicraft available across the Yorke Peninsula and Wakefield plains reflects this Cornish history.

#### *Housing and Land*

There is an abundance of land and affordable housing available in the Yorke Region. For further information there are a number of real estate services capable of handling a range of enquiries about house and land availability. The Yellow Pages - Yorke Peninsula contains details of regional real estate agents who can help with enquiries.

*Government Services*

Government services are provided throughout the region and details can be obtained from local community directories.

## ***Barunga West (DC)***

### *Service Industries*

The principal towns of the Barunga West district, Port Broughton and Bute, service the regional farming community. The major infrastructure and public service facilities are located in Port Broughton. Bute, being the second largest, provides some services and facilities necessary to meet the needs of local people and holiday makers.

### *Regional Health and Child Care*

The region has one hospital, the Port Broughton District Hospital, and aged care is provided by the Barunga Village Aged Care Centre Complex. There are two doctors in the region.

Appendix 1 contains a regional map which details the locations the following facilities throughout the region:

- Public and Private Hospitals
- Community Health Centres
- Child Health Centres
- Youth Health Centres

### *Education and Vocational Training*

The region has one area school, the Port Broughton Area school, and one (two) primary school(s, one) at Bute (and one at Alford -closed)

Appendix 1 contains a regional map which details the following education facilities in the region:

- Public Primary Schools
- Public Secondary Schools
- Private Schools
- TAFE Campuses
- Aboriginal Schools

*Cultural, Leisure and Recreation Facilities*

Regional facilities include:

- Community library
- Heritage centre
- Jetty
- Boat ramp
- Sports stadium
- Fitness centre
- Golf courses
- Bowling, tennis and netball clubs and facilities
- (Harness racing track/hunt course – closed)
- Kulpara Dog racing course
- Gunner Bill's Gallery at Bute

*Housing and Land*

There is an abundance of affordable land available in the Copper Coast region. For further information there are a number of real estate services capable of handling a range of enquiries about house and land availability.

*Government Services*

Government services are provided via the rural transactions centre located at the Council offices in Port Broughton.

## ***Mallala (DC)***

### *Service Industries*

The main service centres within the District Council area include the towns of:

- Two Wells
- Mallala
- Dublin

Two Wells and Mallala are the main service providers within the District. Fifty percent of the region's population is situated within the Lewiston rural living area. The other areas of major population are the service centres of Mallala and Two Wells.

### *Regional Health and Child Care*

The region has one private hospital, the Mallala Community Hospital Inc. which also offers respite care and long term nursing home care for the elderly. The area also offers two medical centres located in Mallala and Two Wells.

There is one Childcare Centre in the region (Two Wells); with Family Day Care providers distributed throughout the District.

### *Education and Vocational Training*

The region has two public primary schools located at:

- Two Wells
- Mallala

### *Cultural, Leisure and Recreation Facilities*

The District Council of Mallala region encompasses a variety of sporting and

---

cultural activities. Examples include:

- Community Library Services
- International Indoor Equestrian Centre
- Lower Light Sky Diving
- Mallala Motor Sport Park
- Mallala Museum
- Middle Beach and Recreation Centre (Samphire Discovery Trail)
- Port Gawler Off Road vehicle Hire Park
- Port Gawler Conservation Park and Historic Wharf
- Port Parham and Webb Beaches (Crabbing/Swimming)
- State's major rifle range and two pistol clubs
- Thompson Beach Walking Trails (Walking Trails)
- Two Wells Community Access Business Resource Internet Centre
- Two Wells Historic Wells Walk & Pudnarla Food Craft & Medicine Trail

### *Housing and Land*

The District Council of Mallala provides opportunities for country living within commuter distance of Metropolitan Adelaide. Considerable land division activity in the Two Wells area in recent times has provided ample supply of serviced residential allotments within walking distance of the town centre. Sufficient space for further expansion exists within current boundaries of both the Two Wells and Mallala townships.

The Lewiston area is the largest rural living enclave in the State providing space to move with opportunities for horse keeping, dog kennelling, and cottage industry in an area enjoying many of the services of a metropolitan location such as sealed roads, storm water drainage, refuse collection and recycling. Although much of this area is on the Gawler River Flood Plain the Council has ensured that the necessary precautionary measures have been taken. Allotments outside of the flood plain are in good supply.

There are also several coastal townships most notably Port Parham and Thompson Beach with the latter still containing a large number of vacant allotments at very affordable prices. Both towns are known for their natural attractions including, fishing, crabbing, swimming, and bushwalking.

## ***Wakefield (DC)***

### *Service Industries*

Wakefield is predominantly a rural community serviced by four main centres:

- Balaklava
- Port Wakefield
- Hamley Bridge
- Snowtown

Balaklava is the region's major business and administrative centre with a comprehensive range of business and retail functions. It has supermarkets, hotels and specialty stores and is also in close proximity to Clare, the Clare Valley and Gawler.

### *Regional Health and Child Care*

Hospitals within the region include:

- Balaklava and Riverton District Health Service
- Hamley Bridge Memorial Hospital
- Snowtown memorial Hospital

The region has three doctors' clinics located at Balaklava, Hamley Bridge and Snowtown. Child and Youth Health Services are located at:

- Balaklava
- Brinkworth
- Hamley Bridge
- Snowtown

A Child and Adolescent Mental Health Service is located at the Balaklava Hospital.

Aged accommodation is provided throughout the region by the following organisations:

- Burkanendi Homes (Blyth)
- Ira Parker Nursing Home (Balaklava)
- Lower North Homes for the Aged (Balaklava)
- Hamley bridge District Senior Citizens Homes
- Lumeah Homes (Snowtown)

There is a community child care centre in Balaklava and many other specialist health services are offered throughout the region.

Appendix 1 contains a regional map which details the locations the following facilities throughout the region:

- Public and Private Hospitals
- Community Health Centres
- Child Health Centres
- Youth Health Centres

#### *Education and Vocational Training*

The region does not have a TAFE college but is in close proximity to several campuses including Gawler, Barossa Valley, Clare, Kadina and Port Pirie.

Secondary education is available at Balaklava High School and Snowtown Area School, with Balaklava having private and public primary schools. The towns of Blyth, Brinkworth, Hamley Bridge, Owen and Port Wakefield all have primary schools.

Kindergartens are located in:

- Balaklava
- Brinkworth
- Hamley Bridge
- Port Wakefield
- Snowtown

Appendix 1 contains a regional map which details the following education facilities in the region:

- Public Primary Schools
- Public Secondary Schools
- Private Schools
- TAFE Campuses
- Aboriginal Schools

#### *Cultural, Leisure and Recreation Facilities*

Balaklava has a wide range of sporting groups and service clubs. It has community libraries and community arts group. Libraries are located as follows:

- Balaklava High School
- Blyth Primary School
- Brinkworth Primary School
- Hamley Bridge Institute
- Owen Primary School
- Port Wakefield Primary School
- Snowtown Area School

Other facilities include:

- Balaklava horse racing track
- Seven Golf Courses
- Balaklava Courthouse Gallery
- Medika Gallery
- Port Wakefield Courthouse Museum Group
- Many community halls

#### *Housing and Land*

There is an abundance of affordable land and a wide range of housing available in the Wakefield region. For further information there are a number of real estate services capable of handling a range of enquiries about house and land availability.

#### *Government Services*

The State Government has SA Water offices located at Balaklava.

The Commonwealth Government Department of Defence Proof Range is located near Port Wakefield.

## ***Yorke Peninsula (DC)***

### *Service Industries*

The main service centres within the District Council area include the towns of:

- Maitland
- Minlaton
- Yorketown
- Warooka
- Ardrossan
- Port Vincent
- Stansbury
- Port Victoria
- Edithburgh

The region's population is dispersed across the main centres with the townships of Ardrossan and Maitland having the highest populations. The regions four major retail centres are Maitland, Minlaton, Warooka and Yorketown.

### *Regional Health and Child Care*

The region has two hospitals, the Central Yorke Peninsula (Maitland) and Southern Yorke Peninsula (Yorketown) Health Services, several doctors and several aged care and retirement facilities

Appendix 1 contains a regional map which details the locations the following facilities throughout the region:

- Public and Private Hospitals
- Community Health Centres
- Child Health Centres

- Youth Health Centres

### *Education and Vocational Training*

The region has four area schools located at:

- Maitland
- Minlaton
- Ardrossan
- Yorketown

There are five primary schools located at:

- Warooka
- Edithburgh
- Stansbury
- Port Vincent
- Point Pearce

There are also two private primary schools, one at Yorketown and one at Maitland.

Campuses of the Spencer Institute of TAFE are located at Yorketown and Point Pearce.

Appendix 1 contains a regional map which details the following education facilities in the region:

- Public Primary Schools
- Public Secondary Schools
- Private Schools
- TAFE Campuses

➤ Aboriginal Schools

*Cultural, Leisure and Recreation Facilities*

Yorke Peninsula is a popular holiday destination and offers a variety of facilities for locals and visitors alike. Examples include:

- The Yorketown Arts and Craft Sale Centre
- Bublacowie Military Museum
- Harvest Corner Tourist Information and Craft
- Gum Flat Gallery
- National Trust Museum and Craft Shop
- The Minlaton Art Spot
- Lime Kiln Gallery
- Stansbury Museum
- Edithburgh Museum
- The Bakehouse Art and Crafts
- Warooka Museum
- Community Library Services
- Many Golf Courses

*Housing and Land*

There is an abundance of affordable land available in the Yorke Peninsula region. There is also an adequate supply of residentially zoned land in most towns and communities to meet short term demand. As noted elsewhere, a lack of water supply is considered to be inhibiting some residential developments. For further information there are a number of real estate services capable of handling a range of enquiries about house and land availability.

*Government Services*

The District Council provides Centrelink services via its offices in Maitland,

Yorketown, Minlaton and Warooka. SA Water also has depots in the region.

## **REGIONAL INFRASTRUCTURE STRENGTHS AND WEAKNESSES**

### *Yorke Region*

This section contains an assessment of the major infrastructure strengths and weaknesses in the Yorke Region.

#### *Strengths*

- Major road networks
- Ports and grain handling facilities
- Inter-modal transport hub at Bowmans with direct link to Port Adelaide
- Access to education facilities and services.
- Access to health facilities and services
- Low cost industrial and residential land
- Affordable housing
- Jetties and boat ramps
- Cultural and recreational facilities
- Caravan parks
- Retail services

#### *Weaknesses/Infrastructure Gaps*

- Lack of water to strategic sites inhibiting development, especially tourism projects
- Lack of 3 phase electricity supply to strategic sites that have industry or tourism development potential
- Lack of a gas distribution systems in the region
- Poor standard of tourist accommodation
- Insufficient accommodation at one premise to cater for bus tourism
- Lack of resort style tourist accommodation
- Lack of public transport

- Road quality at strategic locations (Pt. Wakefield to Kulpara, east coast, Innes National Park)
- Where provided, site septic tank disposal of effluent restricts efficient use of land for residential and holiday accommodation
- Lack of container handling facilities at Wallaroo

## CONTACT INFORMATION

### **Yorke Regional Development Board Inc**

DC of Barunga West  
DC of Mallala

Wakefield Regional Council  
DC of Yorke Peninsula

Mr Warwick Welsh  
Chief Executive Officer  
Yorke Regional Development Board Inc  
51 Robert Street  
MAITLAND SA 5573

#### **Location**

51 Robert Street  
MAITLAND SA 5573

Phone: 8832 2600

Fax: 8832 2599

Email: [admin@yorkeregion.com.au](mailto:admin@yorkeregion.com.au)

Website: [www.yorkeregion.com.au](http://www.yorkeregion.com.au)

#### **BOARD MEMBERSHIP**

Chairperson: Mr Ian O'Loan

Deputy Chairperson: Mr Malcolm May

Business Adviser: David Cowell

## **Appendix 1: Regional Maps**

Sources:

The Atlas of South Australia - [www.atlas.sa.gov.au](http://www.atlas.sa.gov.au)

Australian Bureau of Statistics

ETSA Utilities

SA Water

Telstra

Optus

Origin Energy